

# CASSIA

Poltrona

/ Armchair



# CASSIA

## Poltrona / Armchair

Poltrona con struttura in abete massello e fibra di legno e imbottitura seduta monoblocco in poliuretano. Piedi in metallo verniciato nei colori: bianco, nero, bronzo o ottone con base girevole e sistema di ritorno di posizione.

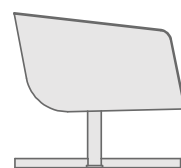
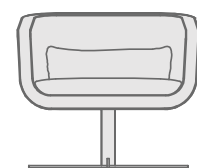
Rivestimento in tessuto non sfoderabile con cucitura a filetto per cotone e velluto.

/ Armchair with solid fir wood and wood fiber structure and monoblock seat padding in polyurethane foam. Varnished metal feet: matte white, black, bronze or brass with chromed metal rotating base with back into position system. Non-removable fabric cover with cotton and velvet welt stitching.

Art. CSS1



Art. CSS1 + BCS + SCS



Dimensioni / Size (L/W x A/H x P/D)  
80 x 68 x 73 cm / 2'7.4" x 2'2.7" x 2'4.7"

Kg 45  
m<sup>3</sup> 0,68

Tessuto / Fabric

Cotone stampato / Printed cotton

Grafica / Graphic

RX4C

Piede / Foot



# CASSIA

## Varianti / Variants

Alcuni esempi di varianti dell'articolo Cassia.  
/ Some examples of variations of the article Cassia.

Art. CSS1+BCU+SCU



68 cm  
2'2.7"

Cotone tinta unita CORA 14 / Solid color cotton CORA 14

Art. CSS1+BVU+SVU



68 cm  
2'2.7"

Velluto tinta unita VERA 37 / Solid color velvet VERA 37

Art. CSS1+BCU+SCS



68 cm  
2'2.7"

Cotone stampato RX4C e cotone tinta unita CORA 17 / Printed cotton RX4C and solid color cotton CORA 17

Art. CSS1+BCS+SCU



68 cm  
2'2.7"

Cotone tinta unita CORA 17 e cotone stampato RX4C / Solid color cotton CORA 17 and printed cotton RX4C

Art. CSS1+BVS+SVS



68 cm  
2'2.7"

Velluto stampato TF1C / Printed velvet TF1C

Art. CSS1+BVU+SVS



68 cm  
2'2.7"

Velluto stampato TF1C e velluto tinta unita VERA 59 / Printed velvet TF1C and solid color velvet VERA 59



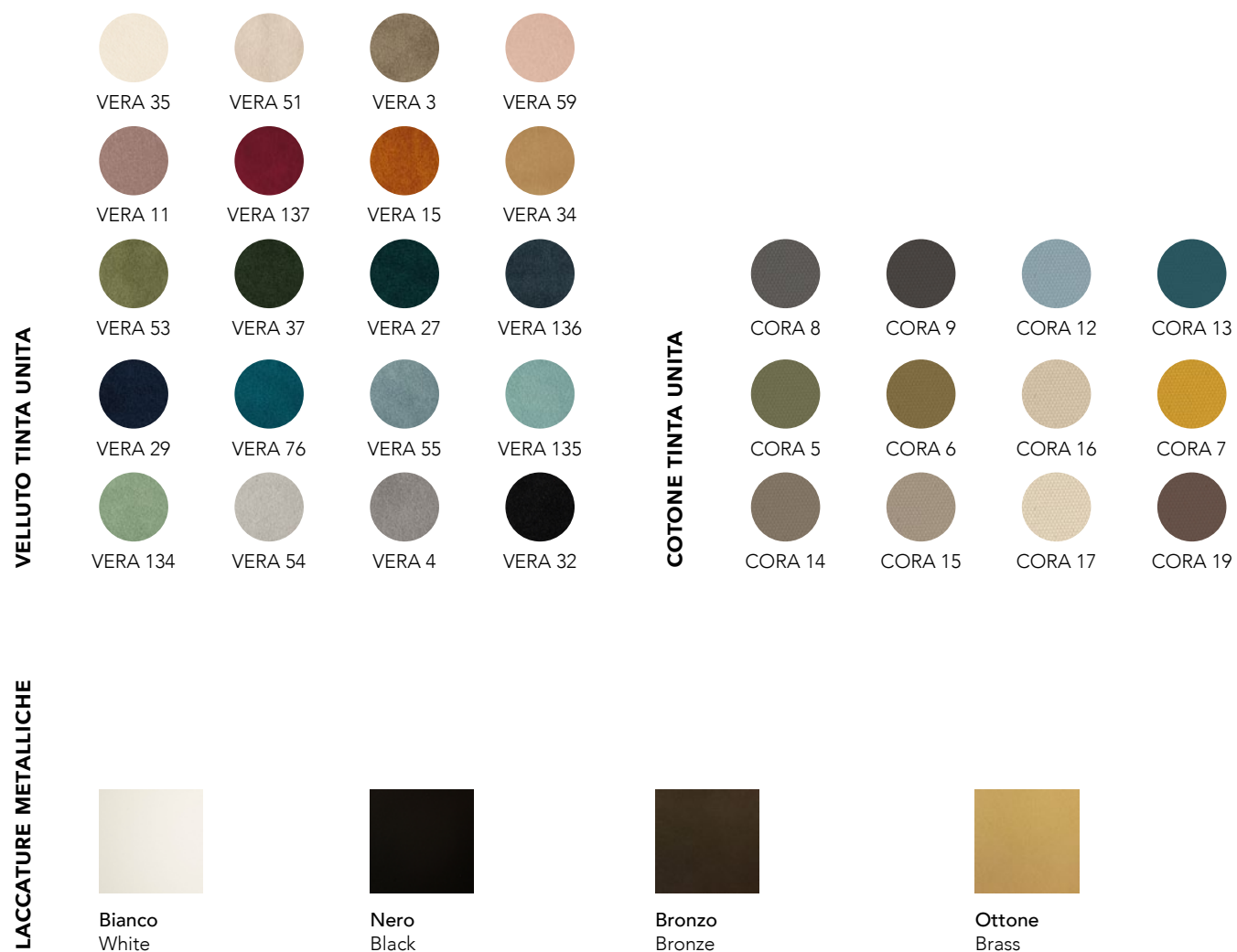
## GRAFICHE

La Capsule Collection nasce da una ricerca attenta e approfondita delle tendenze stilistiche del momento e racchiude le 16 grafiche, divise in 4 collezioni principali (Vision Superb, Eros e Psiche, Tecno Folk e Rx Nuance), ognuna declinata in 3 varianti colore.

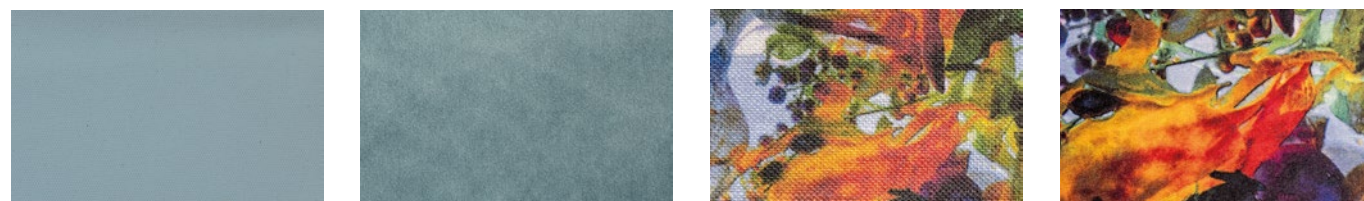
/ The Capsule Collection was born from careful and in-depth research of the stylistic trends and contains 16 graphics, divided into 4 main collections (Vision Superb, Eros e Psiche, Tecno Folk e Rx Nuance), each declined in 3 color variant.



## FINITURE CROMATICHE / CHROMATIC FINISHES



## FINITURE SUPERFICIALI / SURFACE FINISHES



Cotone tinta unita  
/ Solid color cotton

Velluto tinta unita  
/ Solid color velvet

Cotone stampato  
/ Printed cotton

Velluto stampato  
/ Printed velvet