

# SHARP

Credenza

/ Dresser



# SHARP

## Credenza / Dresser

Credenza a 2 ante realizzata con struttura in MDF, con interno laccato opaco. Struttura con bordo inclinato a 45°.

Finitura esterna ed ante: laccato opaco, malta laccato opaco e malta stampata, rivestita con tessuto stampato in fibra di vetro, stampa diretta laccato lucido con finitura extra-gloss.

Finitura protettiva: opaca atossica e lucido extra-gloss. Comprensivo di ferramenta per apertura push pull.

/ Dresser 2 doors with MDF structure, with matt lacquered interior. Structure with 45 ° inclined edge.

External finish and doors: matt lacquered, matt lacquered and printed mortar, covered with glass fiber printed fabric, directly printed with glossy lacquer with extra-gloss finish.

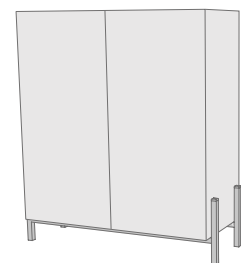
Protective finish: non-toxic opaque and extra-gloss gloss. Including hardware for push pull opening.

Vista interna / Inner view

Art. CR-1A + PH-3M



Art. CR-1A + PH-3M



Dimensioni / Size (L/W x A/H x P/D)  
120 x 141 x 49,5 cm / 3'11.2" x 4'7.4" x 1'7.5"

Kg 87  
m<sup>3</sup> 1,12

Ante / Doors

2

Basamento / Basement

PH-3M



Finitura esterna / External finish

Stampa su Tecno Fiber / Printed Tecno Fiber

Grafica / Graphic

RX1A

Ripiani in vetro / Glass shelves

4

# SHARP

## Basamenti / Basement

Piedi in metallo laccato nei colori: bianco, nero, bronzo e ottone. Comprensivo di piedi livellatori.  
/ Basement in lacquered metal in the colors: white, black, bronze, and brass. Including leveling feet.

Art. CR-1A + PH-3M



141 cm  
4'7.4"

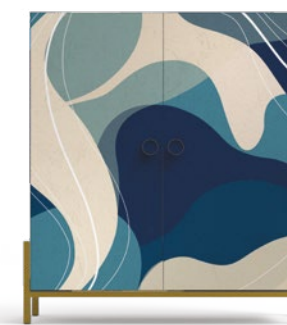
## Maniglie / Handles

Maniglie in metallo lavorate a mano laccate opaco nei colori bianco, nero, bronzo e ottone.

Finitura interna: stampa digitale con trasparente opaco, malta laccata, malta stampata, stampa in Tecno Fiber e stampa digitale con trasparente lucido.

/ Hand-crafted metal handles matt lacquered in white, black, bronze and brass.  
Internal finish: digital printing with opaque transparent, lacquered mortar, printed mortar, techno fiber printing and digital printing with glossy transparent.

Art. CR-1A + PH-3M + NP-1A



141 cm  
4'7.4"

Art. CR-1A + FO-3C



146 cm  
4'9.4"

Art. CR-1A + PH-3M + NP-2A



146 cm  
4'9.4"

## GRAFICHE

La Capsule Collection nasce da una ricerca attenta e approfondita delle tendenze stilistiche del momento e racchiude le 16 grafiche, divise in 4 collezioni principali (Vision Superb, Eros e Psiche, Tecno Folk e Rx Nuance), ognuna declinata in 3 varianti colore.

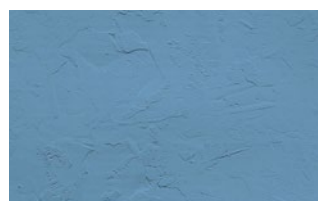
/ The Capsule Collection was born from careful and in-depth research of the stylistic trends and contains 16 graphics, divided into 4 main collections (Vision Superb, Eros e Psiche, Tecno Folk e Rx Nuance), each declined in 3 color variant.



## FINITURE SUPERFICIALI / SURFACE FINISHES



Stampa digitale opaca  
/ Digital matt print



Malta laccata  
/ Laquered mortar



Malta stampata  
/ Printed mortar

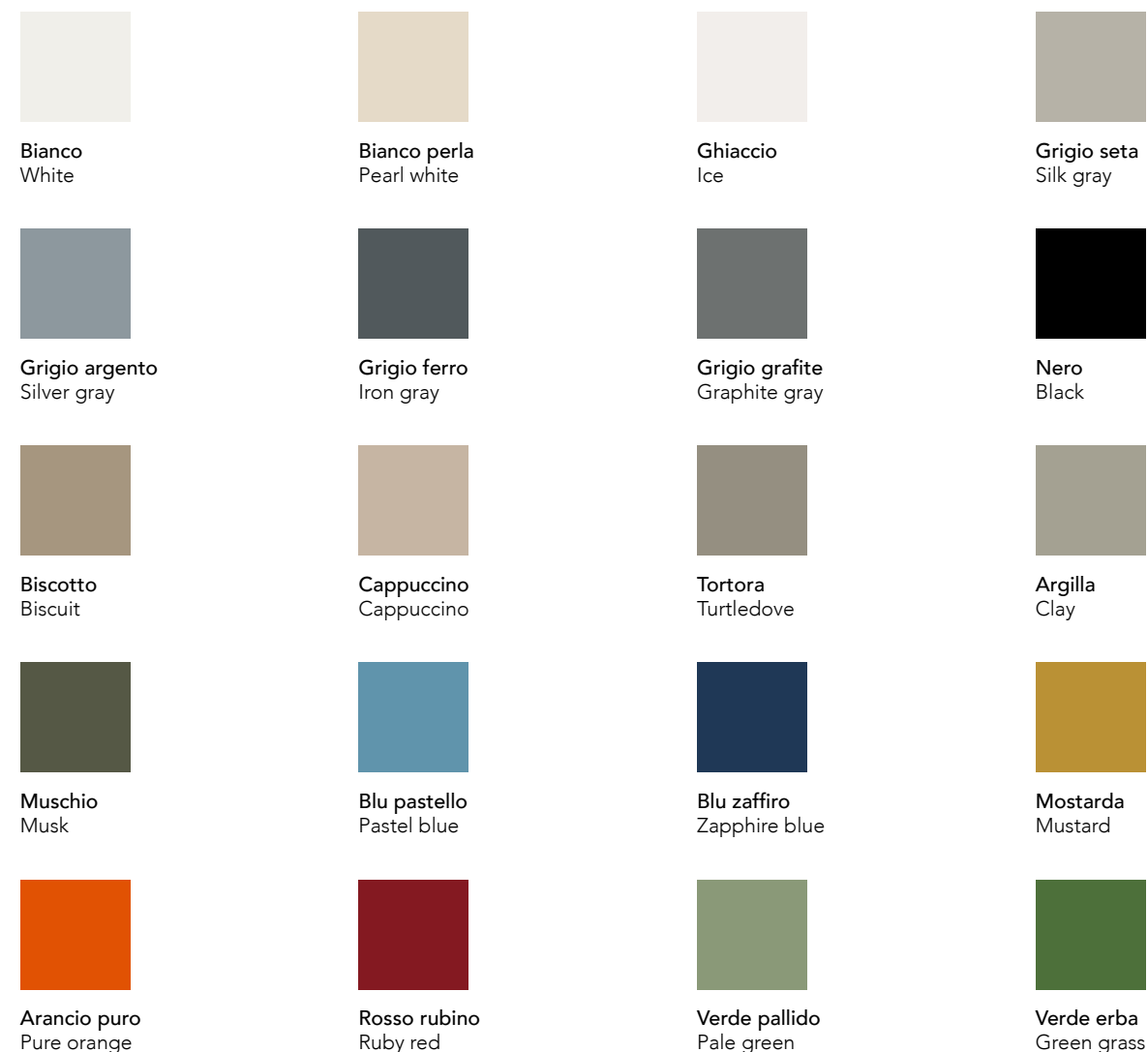


Stampa digitale lucida  
/ Digital glossy print



Stampa digitale su Tecno Fiber  
/ Digital print on Tecno Fiber

## FINITURE CROMATICHE / CHROMATIC FINISHES



LACCATURE OPACHE

LACCATURE METALLICHE

